



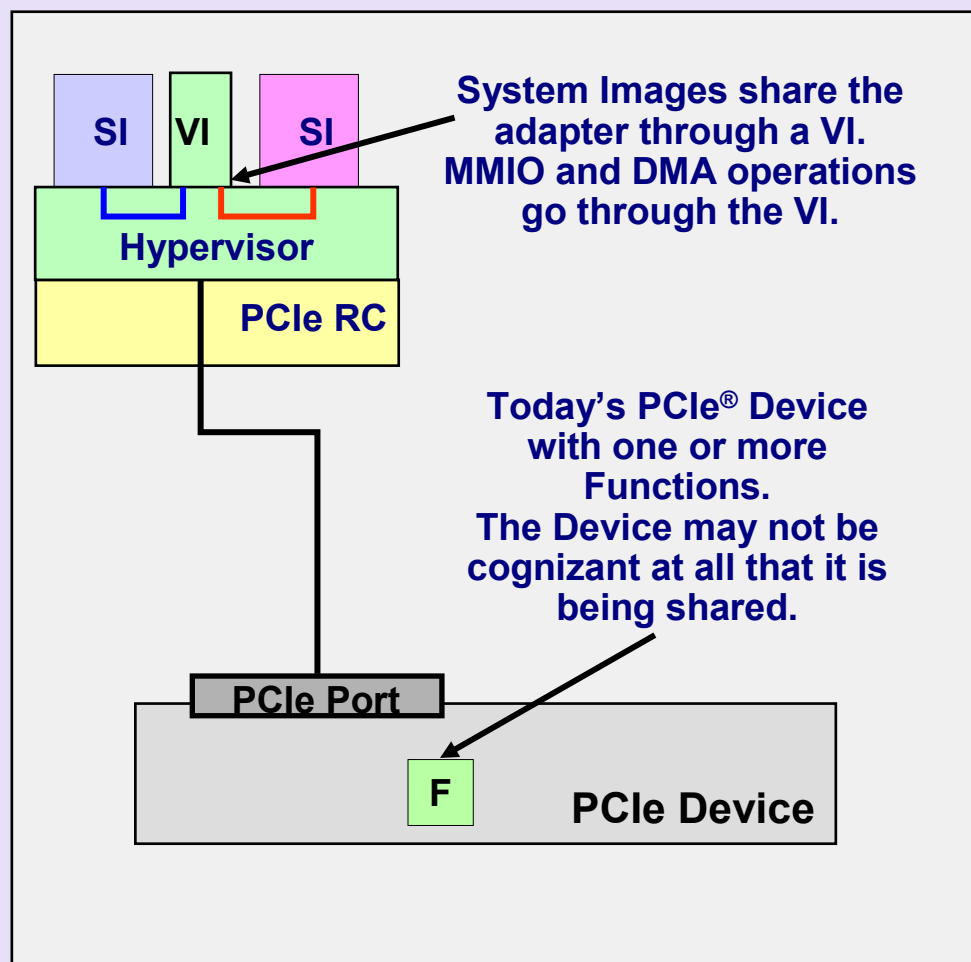
# **IOV Overview and Update**

**Mahesh Wagh**  
**Member, PWG & IOV-WG**  
**Intel Corporation**



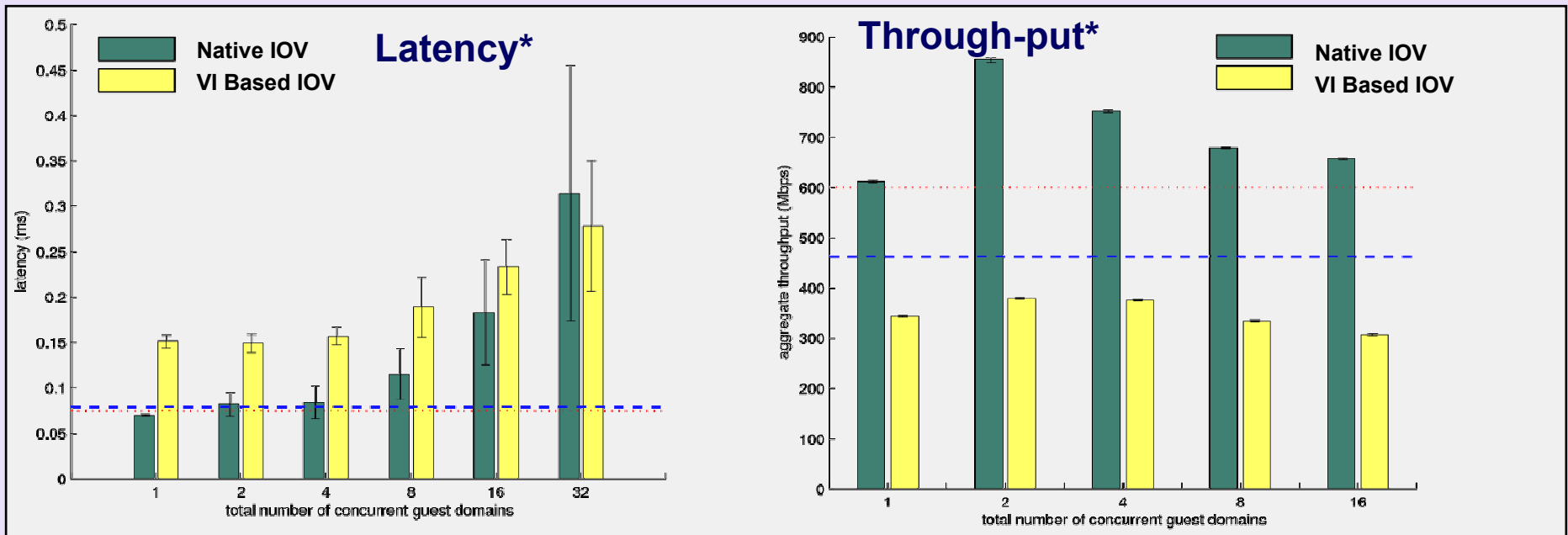
# Today's Approach to IOV

## VI Based PCI Device Sharing Example



- Virtualization Intermediaries (VI) are used to safely share IO.
- Under this approach:
  - ✓ 1 or more System Images (SI) share the PCI device via a VI.
  - ✓ Virtualization enablers are not needed in either the Root Complex (RC) or PCIe Device.
  - ✓ The VI is involved in all IO transactions and performs all IO Virtualization Functions.

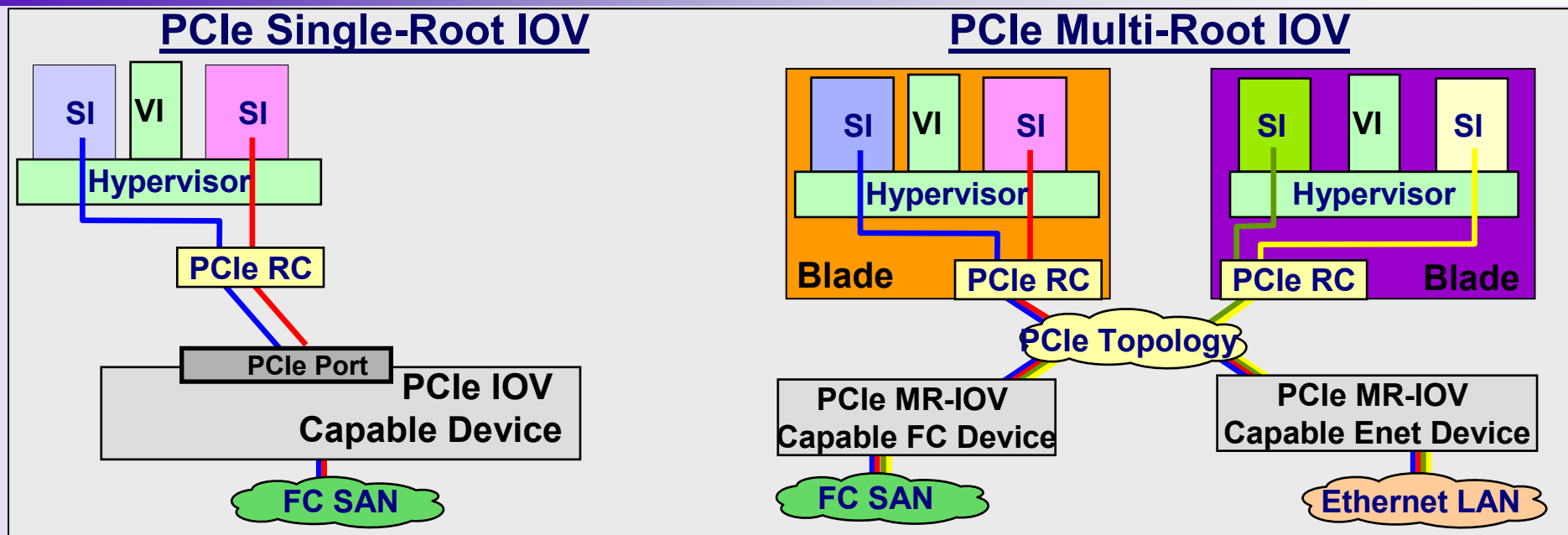
# Performance of Today's IOV



- VI based IOV adds path length on every IO operation.
- Native IOV significantly improves performance
  - ✓ For the example above Native IOV doubles throughput and reduces latency by up to half.
- Several factors are increasing the use of virtualization (e.g. more cores per socket, customer simplification requirements, ...).
  - ✓ Making Native IOV even more important in the future.

\*Source: Self-Virtualized I/O: High Performance, Scalable I/O Virtualization in Multi-core Systems; R. Himanshu, I. Ganey, K. Schwan - Georgia Tech and J. Xenidis - IBM

# PCI-SIG® IOV Overview



- PCI-SIG is standardizing mechanisms that enable PCIe Devices to be directly shared, with no run-time overheads:
  - ✓ Single-Root IOV - Direct sharing between SIs on a single system.
  - ✓ Multi-Root IOV - Direct sharing between SIs on multiple systems.
- PCI-SIG IOV Specification only covers Device's "north-side".
  - ✓ Some example usage models will be covered in other presentations.

# I/O Virtualization – Who?

- Wide variety of motivations
  - ✓ CPU/chipset vendors
    - Enable new functionality with multi-core CPUs
    - Preserve existing investments
  - ✓ Server vendors
    - Expand acceptance/implementation of IOV so they can multi-source silicon
    - Preserve existing investments
  - ✓ Graphics vendors
    - Standardize access to system memory via ATS
  - ✓ Switch vendors
    - Standardize Multi-Root switches and allow shared access to MRA devices
  - ✓ Software vendors
    - Standardize discovery and configuration of IOV-capable devices
    - Accelerate their virtual machine implementations
  - ✓ I/O Device vendors
    - Meet customer demand for shared devices without sacrificing existing multi-device markets

# I/O Virtualization – What? 1/2

From an adapter point of view:

- One physical device looks like multiple devices
  - ✓ Multiple views of the same physical device
    - E.g., multiple views of a SAS controller or NIC
- Virtual devices appear completely independent
  - ✓ Each virtual device is assigned its own PCIe addresses
  - ✓ Each virtual device's BARs can be separated by the system page size.
  - ✓ Each virtual device appears as a separate PCIe Function in configuration space
  - ✓ May have different settings for various Configuration registers
  - ✓ Need to keep cross-"device" traffic isolated
  - ✓ An endpoint may export a mix of "base" Functions and IOV-enabled Functions in SR-IOV.

# I/O Virtualization – What? 2/2

From a system point of view:

- *System Image* (SI) is a real or virtual system of CPU(s), Memory, O/S, I/O, etc
  - ✓ SI is just another name for an OS running on top of a Virtualization Manager. (e.g., An instance of linux running in a Xen Dom0 or DomU).
  - ✓ Multiple SIs may run on one or more sets of hardware
    - E.g. VMWare running Win32 & Linux on a single CPU
    - E.g. Blade server running multi-OS each on a single blade
- Each System Image sees it's own PCI hierarchy
  - ✓ Even if NO end devices are actually shared
  - ✓ Only its *portion* of shared end devices

# I/O Virtualization – Definitions 1/4

- IOV – I/O Virtualization
  - ✓ A hardware method of exporting multiple views of the same *device*.
- SR-IOV – Single Root I/O Virtualization
  - ✓ PCI-SIG defined methods for exporting multiple views of the same device in a traditional PCIe base fabric.
  - ✓ No PCIe protocol changes. Works with existing PCIe fabrics.
  - ✓ May be ignored by SR-IOV unaware software/firmware.
    - In this case, it works just like base PCIe



# I/O Virtualization – Definitions 2/4

- MR-IOV – Multi-Root I/O Virtualization
  - ✓ PCI-SIG defined methods for exporting and managing multiple views of the same device in a PCIe fabric that can be connected to more than one root port.
  - ✓ From each root ports' perspective, the fabric appears to be a traditional PCIe base fabric.
  - ✓ No change to Root Complex. No change to non-MR endpoints.
  - ✓ Changes to MR aware switches and endpoints to support multiple *Virtual Hierarchies*.
  - ✓ PCIe protocol changes (TLP Header) and new automatic training sequences for MR aware switches and endpoints.
  - ✓ Requires configuration and management:
    - Create and configure *Virtual Hierarchies*
    - Handle certain errors and events.

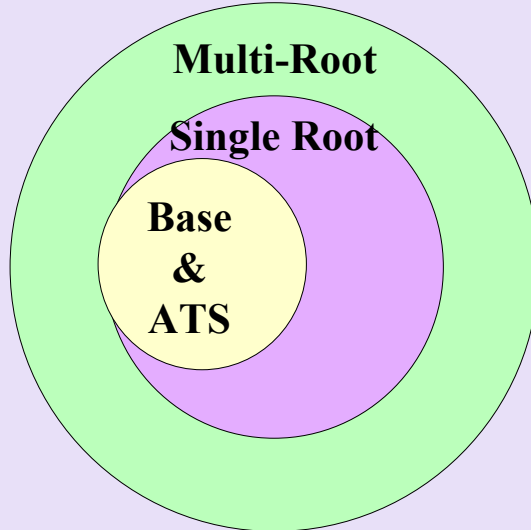
# I/O Virtualization – Definitions 3/4

- Function
  - ✓ PCIe base-defined function as with base PCI and PCIe
- Virtual Function (VF)
  - ✓ A *virtual view* of a physical device.
    - Looks like a Function: RID, configuration space, memory space, etc.
- Physical Function (PF)
  - ✓ A Function that includes the SR-IOV capability.
    - An anchor for creating *Virtual Functions* and reporting errors and events that cannot be attributed to a single *virtual function*.
- Base Function (BF)
  - ✓ A Function that includes the MR-IOV capability.
    - An anchor for creating/managing *Virtual Hierarchies* and PFs within VHs and reporting errors and events that cannot be attributed to a single VH.
    - Does not implement the *mission function* of the device.

# I/O Virtualization – Definitions 4/4

- System Image (SI)
  - ✓ The OS running in a domain (e.g., linux in Dom0 or Domu)
- Virtual Intermediary (VI)
  - ✓ Hypervisor that provides physical resource protection between SIs running on a system.
- Single Root PCI Manager (SR-PCIM)
  - ✓ The SR-IOV specification's *name* for the configuration, management and protection software/firmware for SR-IOV implementations.
- Multi Root PCI Manager (MR-PCIM)
  - ✓ The MR-IOV specification's *name* for the configuration and management software/firmware for MR-IOV implementations.

# I/O Virtualization – How?



**“Concentric Circles” model**

- Attachment of existing PCIe Base components
  - ✓ Root Complexes, Switches, Endpoints, and Bridges.
- A solution to use a combination of existing base and IOV-aware components:
  - ✓ Single Root capabilities are a superset of the PCIe Base specification.
  - ✓ Multi-Root capabilities build on the Single Root capabilities or base capabilities.
  - ✓ Objective is to maximize component interoperability across multiple topologies
  - ✓ IOV-capable components are backwards compatible with existing software.
  - ✓ Although some or all of the new IOV capabilities may not be supported in these circumstances.

# I/O Virtualization: SR-IOV 1/4

- Single Root IOV (SR-IOV)
  - ✓ Fits into existing PCIe hierarchies today
    - *Systems* with traditional single point of attachment to a PCIe fabric.
    - Single PCIe address spaces – partitioned and allocated *above* the Root Complex
      - Uses Routing ID (the Bus/Device/Function number) in packets to track transactions back to the appropriate SI.
  - ✓ Same PCIe base protocol
  - ✓ After reset, only the Physical Function exists.
    - And may be used exactly like any Function today.
  - ✓ SR-PCIM may configure the PF's SR-IOV Capability and create Virtual Functions and assign them to SIs

# I/O Virtualization: SR-IOV 2/4

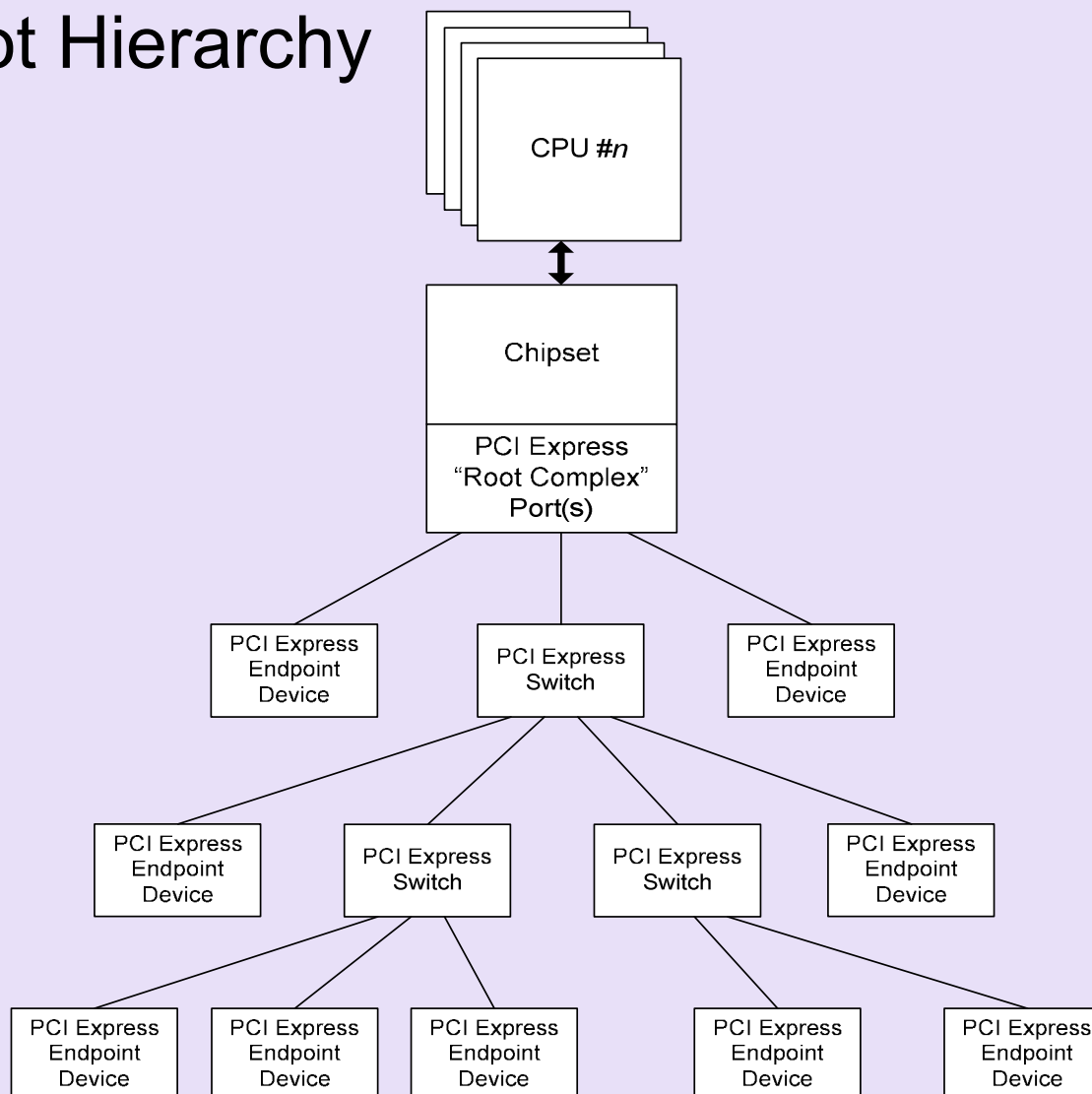
- Single Root IOV (continued)
  - ✓ Supports thousands of virtual views
    - ARI support: up to 256 Functions using a single bus number.
    - IOV aware Physical Functions must be on the first bus number.
    - Endpoint may consume multiple bus numbers.
      - Permits Virtual Function expansion for > 256 functions.
      - Capture the Routing ID only on configuration space write transactions targeting the first bus number. (type 0 only).
      - No changes to the downstream port above the endpoint!
        - Configuration space transactions targeting function numbers > 255 are received as “type 1” configuration space transactions and are consumed by the endpoint.

# I/O Virtualization: SR-IOV 3/4

- Single Root IOV (Continued)
  - ✓ Existing Root Complex (+Optional ATC support)
  - ✓ Existing Switches (+Optional ARI support)
  - ✓ New Endpoint silicon
  - ✓ Presumes existence of a Virtualization Intermediary (VI) aka Hypervisor
    - Direct result of “don’t change the chipset!” philosophy
    - Opens market to existing systems
    - Shifts substantial burden to software

# I/O Virtualization: SR-IOV 4/4

- Single Root Hierarchy

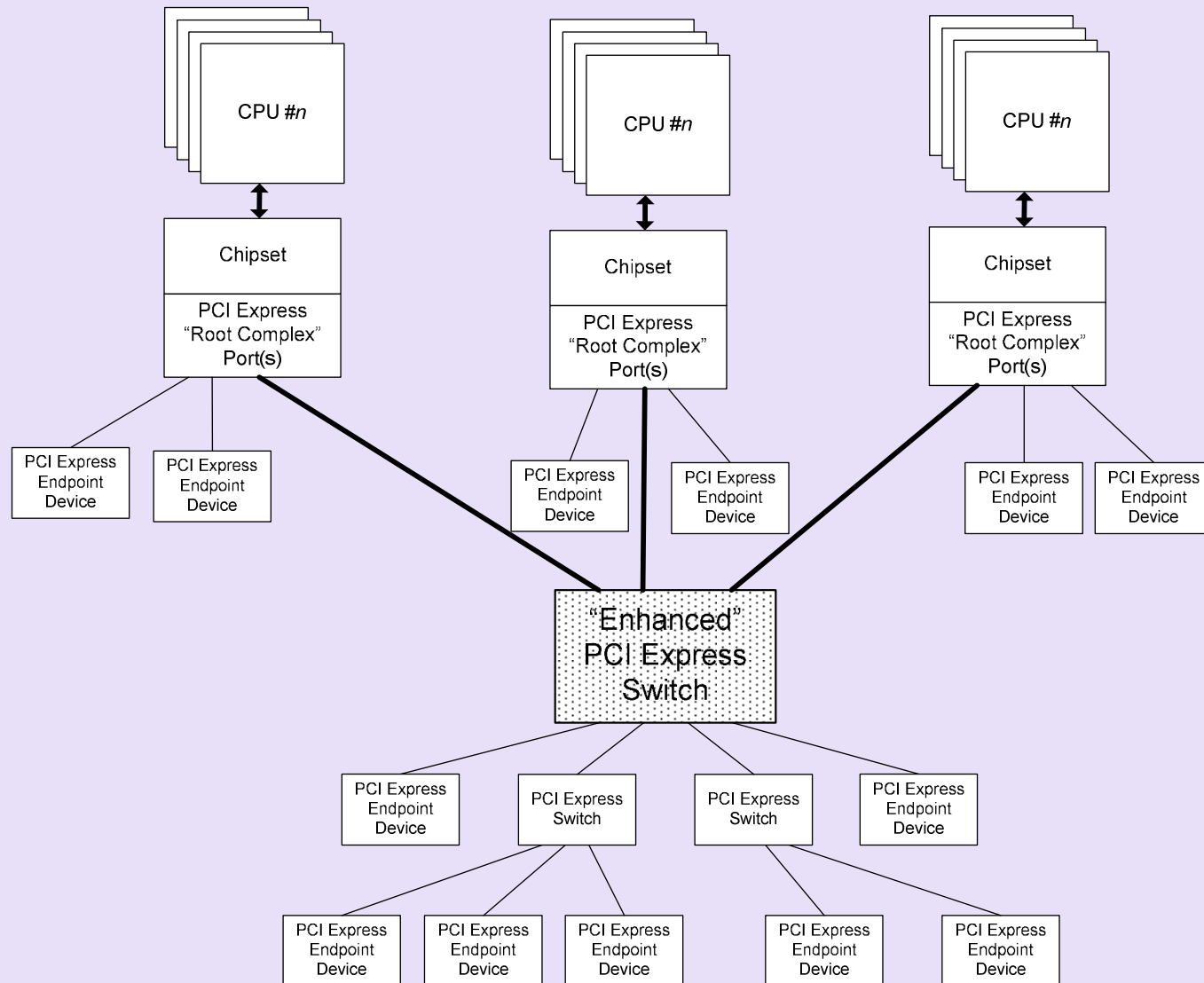




# I/O Virtualization: MR-IOV 1/5

- Most obvious example is a blade server with a PCIe “backplane”
- New PCIe hierarchy construct
  - ✓ Effectively a (mini) fabric
  - ✓ Logically partitions the PCIe fabric into multiple Virtual Hierarchies (VHs) all sharing the same physical hierarchy
  - ✓ Targets “small” systems with 16-32 Root Ports as likely max
  - ✓ A “special” management hierarchy does initial configuration.

# I/O Virtualization: MR-IOV 2/5



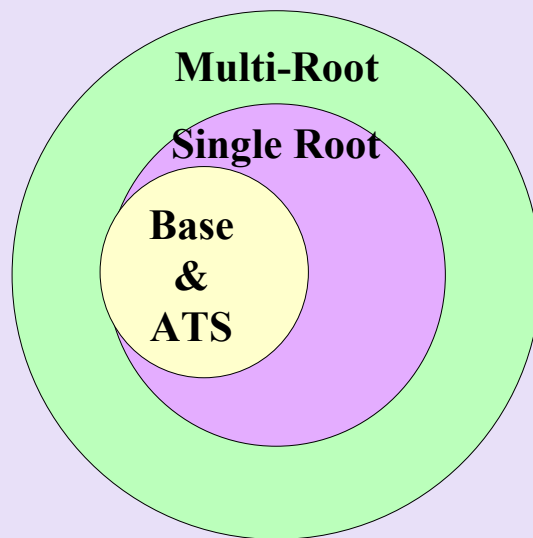
# I/O Virtualization: MR-IOV 3/5

- New protocol
  - ✓ TLP header for MR-IOV
    - Used for routing TLPs within the MR-aware fabric
  - ✓ New training sequence
    - Try new MR training sequence first.
    - Try PCIe base training sequence second.
- New Switch silicon
  - Support for new TLP header and new training sequences.
  - Initial MRA point for discovering MR-aware devices.
  - Lots of configuration, management and error handling “knobs”. (virtual switches, virtual hot-plug support, ...)
  - Support for multiple Virtual Hierarchies (routing tables, etc.)

# I/O Virtualization: MR-IOV 4/5

- New Endpoint silicon
  - ✓ TLP header for MR-IOV
    - Which VH is being targeted by the TLP.
  - ✓ New training sequence
    - Try new MR training sequence first.
    - Try base training sequence second.
  - ✓ Support for multiple Virtual Hierarchies
  - ✓ Optional support for SR-IOV within each VH.

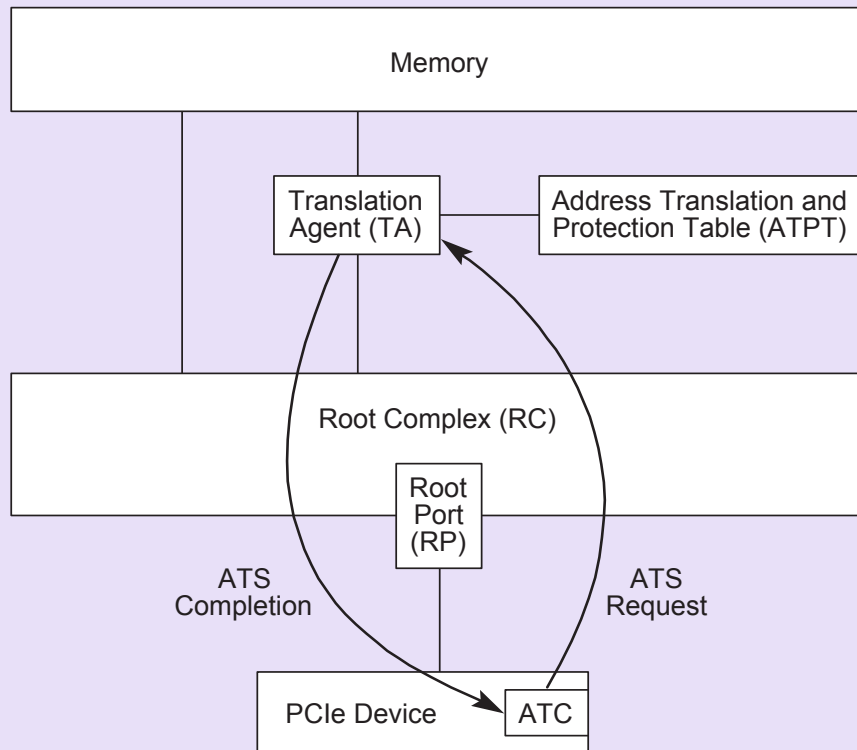
# I/O Virtualization: MR-IOV 5/5



**“Concentric Circles” model**

- Concentric Circles
  - ✓ SR-IOV builds on PCIe base
  - ✓ MR-IOV builds on PCIe base and SR-IOV.
- Each Virtual Hierarchy(VH) in MR can be independently enabled for SR-IOV or not.
  - ✓ MR aware endpoints will have 1 or more VHs enabled. Thus, they will export some PCIe base Functions or SR-IOV Physical Functions to each VH.
  - ✓ The SI may enable SR-IOV on any Physical Function that it's permitted to access.
- Endpoint devices may have some Functions operating in base (non-IOV) mode while others are in either or BOTH IOV modes

# Address Translation Services 1/3



A-0589

Optional normative cooperative protocol to extend address translations to “trusted” devices.

TLP bit indicates translated addresses in read/write transactions.

Must be enabled by software via the ATS capability in Functions.

## Address Translation Services 2/3

- Defines a set of transactions PCIe components can use to exchange and share translated addresses
  - ✓ With an I/O MMU, PCIe bus addresses can map to different system physical addresses based on the “identity” of the agent using them
    - Allows each SI to appear to use the entire address space
    - System’s I/O MMU does translation of untranslated addresses
      - Expensive in performance terms
      - Impossible to size I/O MMU’s TLB or cache for all applications
    - ATS aware devices can translate an address range and bypass I/O MMU if ATS is also supported by the root complex.
  - ✓ New PCIe transactions for translation Requests, Completions, and Invalidations
  - ✓ Modified PCIe TLP header (2 reserved bits) to indicate whether a given address is pre-translated or not

## Address Translation Services 3/3

- Implementation is optional even for IOV aware devices and the root complex. (Optional Normative.)
- After a reset, ATS is disabled and may be enabled by ATS aware system software. (If the root complex also supports ATS.)
- System software is required to send invalidates downstream to any ATS-enabled device for any transaction cached by that device's ATC when that translation changes or is removed. (TLB flush).
- Trust issues: Since enabling ATS allows the Function to generate read/write transactions that bypass the I/O MMU protection, the system software *should* trust that Function and its driver before enabling ATS.



# Endpoint Impact 1/8

- Each SI that needs direct access to the Function needs its own Virtual Function.
  - ✓ The device needs  $n$  sets of configuration space to support  $n$  VFs.
  - ✓ The device needs  $n$  sets of registers to support  $n$  VFs.
  - ✓ The device may need  $n$  sets of internal logic to support  $n$  VFs.
- VFs and PFs must support Function Level Reset (FLR).
  - ✓ FLR targeting a VF *resets* only that VF. Other VFs and the PF are not affected.
  - ✓ FLR targeting a PF *resets* the PF including the VF Enable bit in the SR-IOV cap. VFs are destroyed if the PF is reset.

## Endpoint Impact 2/8

- Single Root PCI Manager (SR-PCIM) creates, manages and assigns VFs to SIs.
- SR-PCIM uses the PFs SR-IOV extended capability to create VFs.
  - ✓ Number of VFs that the PF is able to support
  - ✓ Number of VFs that the PF should create (NumVFs)
  - ✓ VF BAR registers (one set of BARs for all VF's memory space. BARs are *not* replicated in VF config space.
  - ✓ VF Bus Master Enable and VF Enable
  - ✓ Pointer to first VF and VF Stride (locate VFs RID)
  - ✓ VF State Table and State Change status and interrupt.
    - Supports VF migration between VFs if the device is MR-IOV aware.
    - Optional and may be disabled by SR-PCIM.

# Endpoint Impact 3/8

- **BF: Base Function** – A Function that appears only in the MR management hierarchy.
  - ✓ An anchor for managing and configuring the VHs and number of PFs and allocations of VFs to each VH for this device.
  - ✓ Not a *mission* function (e.g. can't be used for booting or work)
  - ✓ Handles all errors that cannot be attributed directly to a VH
    - E.g, link errors and errors that may affect more than one VH are sent to MR-PCIM in most cases.

# Endpoint Impact 4/8

- **PF: Physical Function** – A base PCIe Function that includes the SR-IOV extended capability.
  - ✓ Is a *mission* Function. (e.g., can be used for boot or work)
  - ✓ Used to manage and configure Virtual Functions.
  - ✓ Single function device
    - SR only: has one
    - MR: Has  $m$  when there are  $m$  Virtual Hierarchies
  - ✓ Multi-function device with  $x$  Base Functions
    - Single root only: has  $x$
    - Multi-root: Has  $m \cdot x$  when there are  $m$  Virtual Hierarchies
  - ✓ Error reporting for any error that cannot be attributed directly to a VF. (e.g., link errors)

# Endpoint Impact 5/8

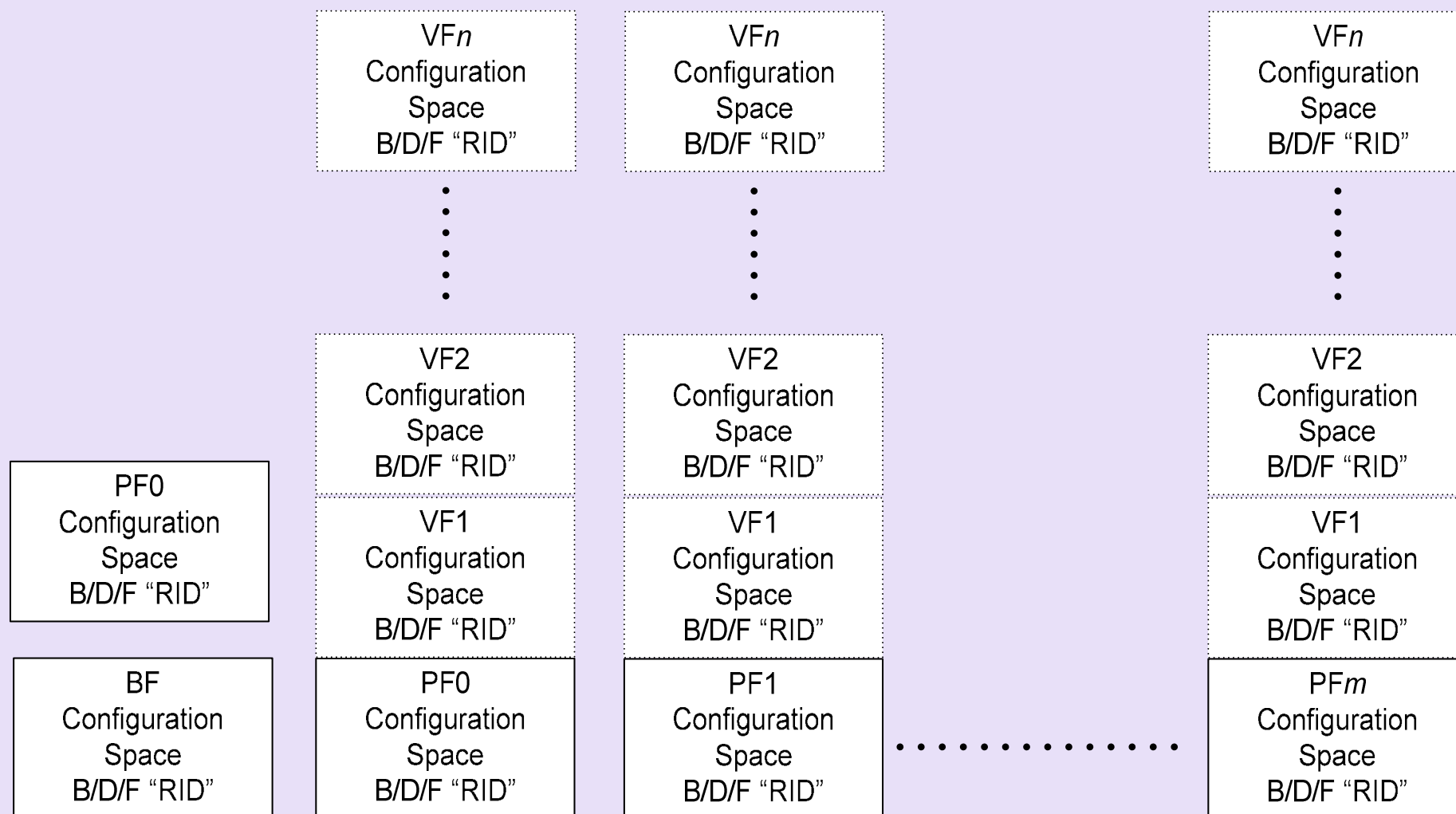
- **VF: Virtual Function** – *A virtual view of a PF.*
  - ✓ Has configuration space and its own unique Requestor ID
    - Type 0 header
    - Many fields are implemented directly
    - Some fields are read-only copies of the PF
    - Some fields do not exist (e.g., VF BARs are implemented in the PF.)
    - It is expected that the VI (Hypervisor) will provide access to fields not implemented in the VF config space
  - ✓ May have PCIe memory space. (e.g. *Mission* registers)
  - ✓ Must not use PCIe I/O space.
  - ✓ Has its own set of MSI and/or MSI-X registers for interrupts.

# Endpoint Impact 6/8

- VF Base Address Registers (BARs)
  - ✓ BARs are not implemented in each VF
  - ✓ Instead, they are implemented as a single set of BAR-like registers in the SR-IOV extended capability (VF BARx)
    - Additional decoders now required for a VF-specific set of BARs
    - Individual VF BARs may have required large CAMs (Cost)
  - ✓ Logically concatenates Virtual Functions into one contiguous chunk of PCIe memory space per implemented VF BAR.
    - Note that the System Page Size field in the SR-IOV capability allows SR-PCIM to specify the minimum stride between VFs address spaces.
- Expansion ROM BAR not implemented for VFs
  - ✓ Use the PFs expansion ROM BAR
    - PCI ROM BAR shared decoding is not permitted. (A PCI legacy feature).

# Endpoint Impact: 7/8

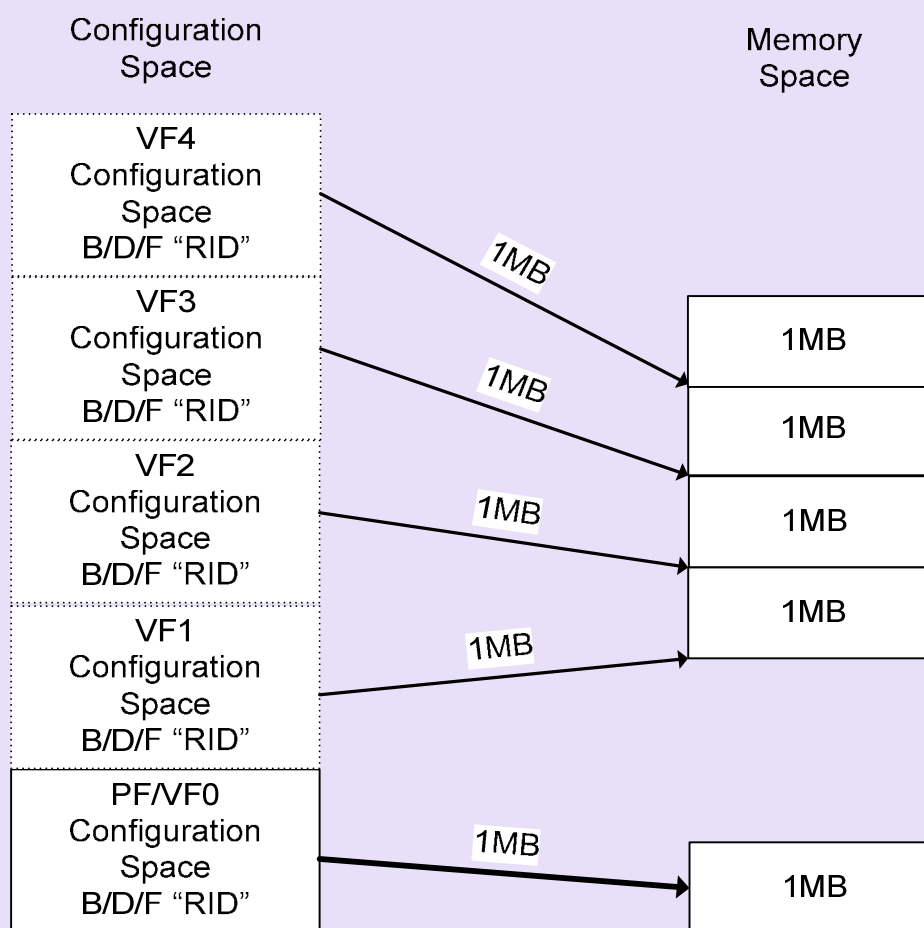
## Multi-Root view of Configuration Space



# Endpoint Impact: 8/8

## Multi-Root view of Configuration Space

- Example VF BARx Memory Mapping with 1MB Size





Thank you for attending the  
PCIe Technology Seminar

For more information please go to  
[www.pcisig.com](http://www.pcisig.com)



# Backup Material

# Protocol Details – Single Root

- No new TLPs
  - ✓ The same PCIe base protocol that we know and love
- Routing ID (RID) indicates who sent the packet
  - ✓ MemRead and MemWrite include the senders RID.
  - ✓ I/O MMU may use the RID to help translate address in the context of the SI that the device is assigned to.
  - ✓ Packets sent downstream that are routed by address are still routed by address to the appropriate function in the endpoint
  - ✓ Packets sent downstream that are routed by RID are decoded in the endpoint and internally routed to the appropriate function.
  - ✓ If the endpoint supports more than 8 or 256 functions, for function numbers > 255, the endpoint will receive *type 1* config space transactions, and must accept them if they target a function in the endpoint.

# Protocol Details – Multi-Root

- New TLP Header – Virtual Hierarchy identifier
  - ✓ Every TLP will include the new TLP header in an MR-A fabric
    - Local to that bus segment
    - Tied to a particular root complex by the programming of routing table in MR-A switch hierarchies
  - ✓ New DLLPs
    - Per-plane reset & Additional flow control
- New flow control
  - ✓ Virtual Link (VL) concept
    - MR IOV equivalent of Virtual Channels (VCs)
    - Provides wide range of implementation flexibility

## Protocol Details – Multi-Root (cont'd)

### Virtual Link Flow Control

- (VP,VC) pair is the unit of control
- Single VL may contain multiple ( $VH_x$ ,  $VC_y$ ) pairs
  - ✓ BUT no more than one VC per VP
- Multi-Root devices may support between 1 and 8 VLs
- Flow control tracked per VL and per (VP,VC) pair
  - ✓ Transmitter must track flow control for all VLs and (VP,VC) pairs a device can support
    - E.g. single VL, single VC, 8 plane device tracks 9 ( $1+1*8$ ) sets of flow control information
    - E.g. dual VL, dual VC, 8 plane device tracks 18 ( $2+2*8$ ) sets of flow control information
  - ✓ Receiver may advertise different levels of flow control depending on complexity/desired data flows
    - E.g. single VL, single VC, 8 plane device with a single queue may advertise  $\infty$  credit for all 8 (VP,VC) pairs and *finite* credit for the VL
    - E.g. single VL, single VC, 8 plane device with a queue per VP may advertise *finite* credit for all 8 (VP,VC) pairs and  $\infty$  credit for the VL